

USER TEST

Expert Review and Card Sorting

www.glyptoteket.com

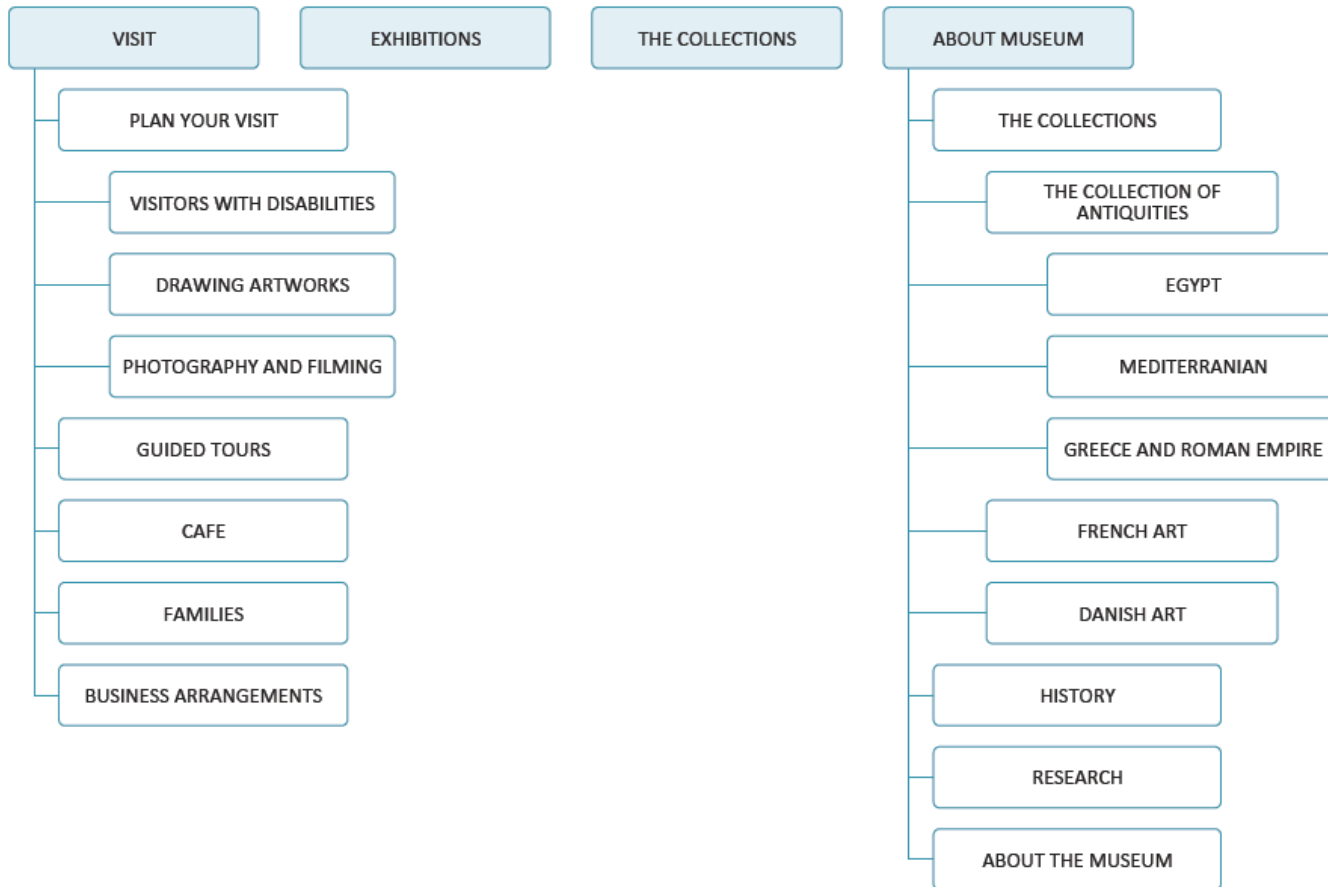
EXPERT REVIEW

No	Heuristic: Name/No.	Location: URL	Problem: Description	Category: 1-4 points	Solution: Proposal for improvement
1	#8 Aesthetic and minimalist design	http://www.glyptoteket.com/search/node/art%20language%3Aen	Can't distinguish between links and text in the results in search bar.	1	Use bold font for link.
2	#4 Consistency and standards	http://www.glyptoteket.com/	No current page distinction	2	Create breadcrumbs
3	#2 Match between system and the real world	http://www.glyptoteket.com/	The slideshow, which promotes three exhibitions on home page, is located badly.	2	Repurpose the slider navigation so it's easier to see and understand what it is for
4	#8 Aesthetic and minimalist design	http://www.glyptoteket.com/search/node/art%20language%3Aen	Search bar is placed down left corner	1	Replace the search bar to the right upper corner.
5	#2 Match between system and the real world	http://www.glyptoteket.com/	User is forced to go to another website for different language	3	A language option should be implemented for easier user experience.
6	#8 Aesthetic and minimalist design	http://www.glyptoteket.com/	Menu Buttons are poorly positioned	1	Should be positioned horizontally for better usability
7	#7 Flexibility and efficiency of use	http://www.glyptoteket.com/	User information placed in the middle of the webpage	3	Box minimized and moved to footer, but still easily visible.

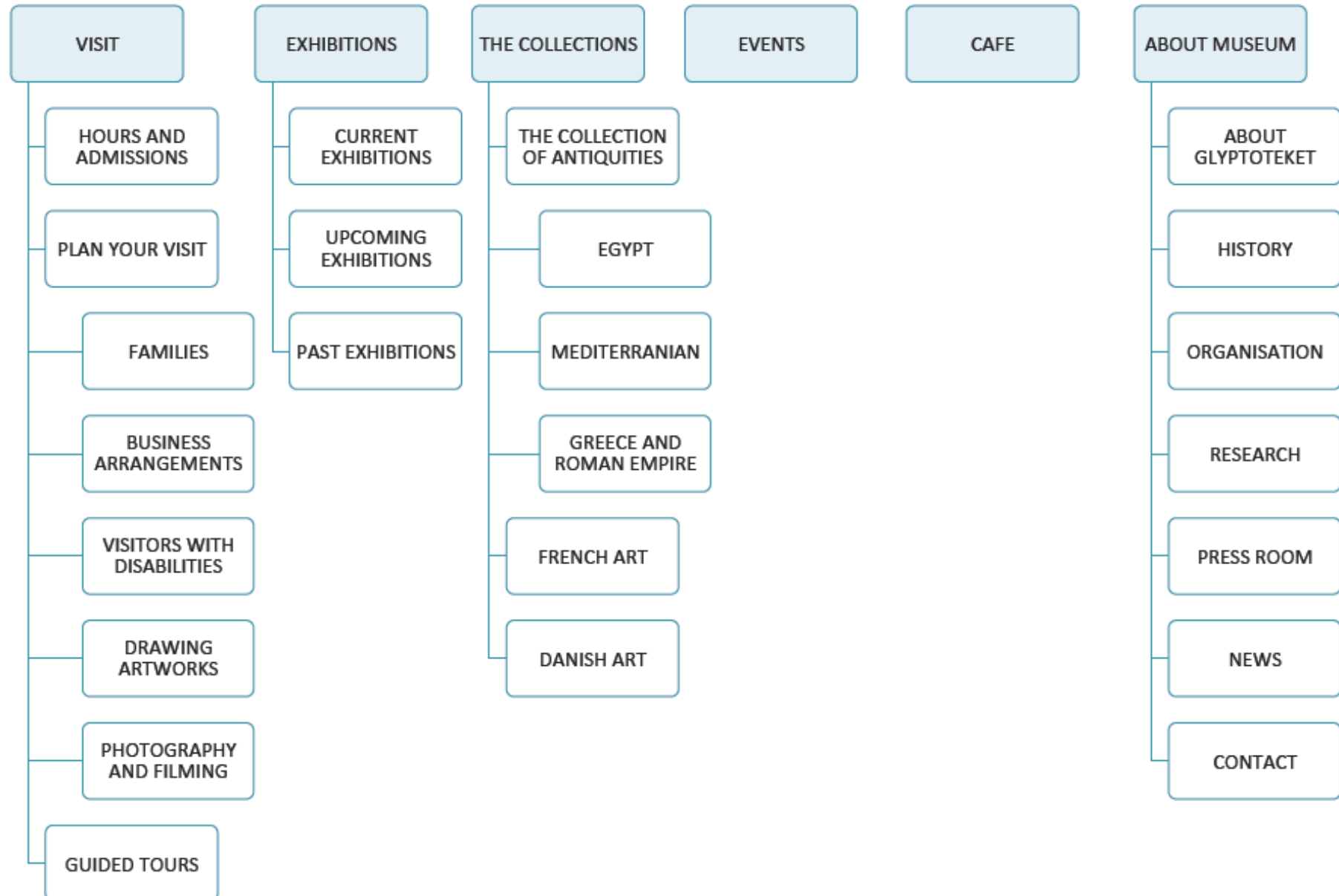
8	#4 Consistency and standards	http://www.glyptoteket.com/whats-on/exhibitions	The 'Visit' and 'Explore' pages look the same	3	They should present some variety for avoiding a user being confused.
9	#7 Flexibility and efficiency of use	http://www.glyptoteket.com/whats-on/calendar	Promoted events banner are too big, bad positioned, poorly designed and require two pages for displaying	2	Should be positioned in a grid style, smaller and more different from each other for better recognition
10	#8 Aesthetic and minimalist design	http://www.glyptoteket.com/	Slide show takes up entire background and is irritating from a contrast point of view.	2	Different background and slide show should be minimized.
11	2. Match system and the real world	http://www.glyptoteket.com/visit/plan-your-visit/drawing-artworks	Actions in menu are linked unnatural and have illogical order. Issues with the website's hierarchical structure.	3	Fix the website's hierarchy structure and the navigation menu
12	4. Consistency and standards	http://www.glyptoteket.com/explore/history-glyptotek	Clicking in the middle of the picture you go to home page. This is not what you expect. A user expects to see the picture.	2	Canceling the function or fix it.
13	4. Consistency and standards	http://www.glyptoteket.com/	The logo is place on the right – illogical for the user.	2	Move it to the left upper corner.

CARD SORTING TEST

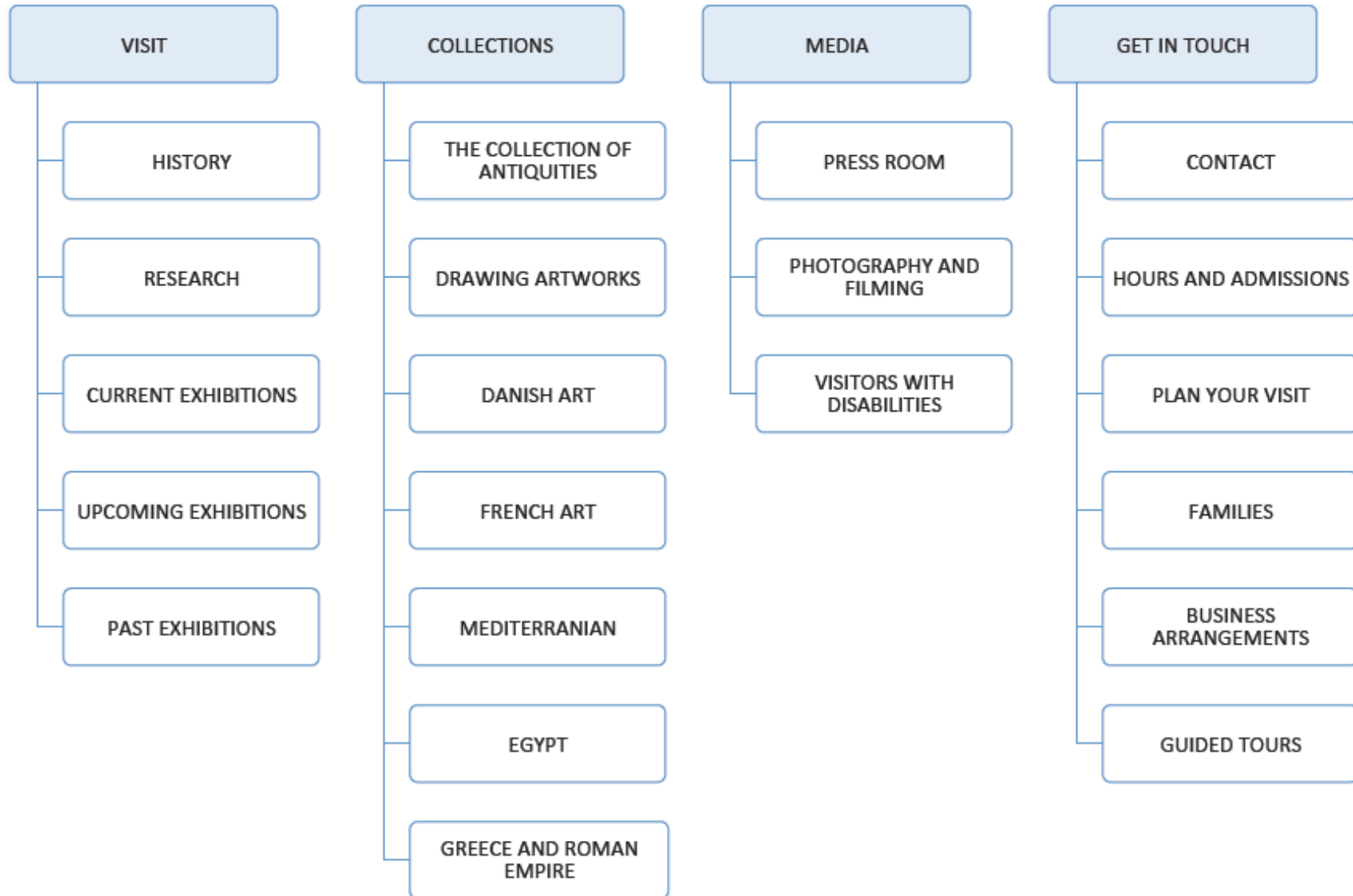
OLD MENU STRUCTURE



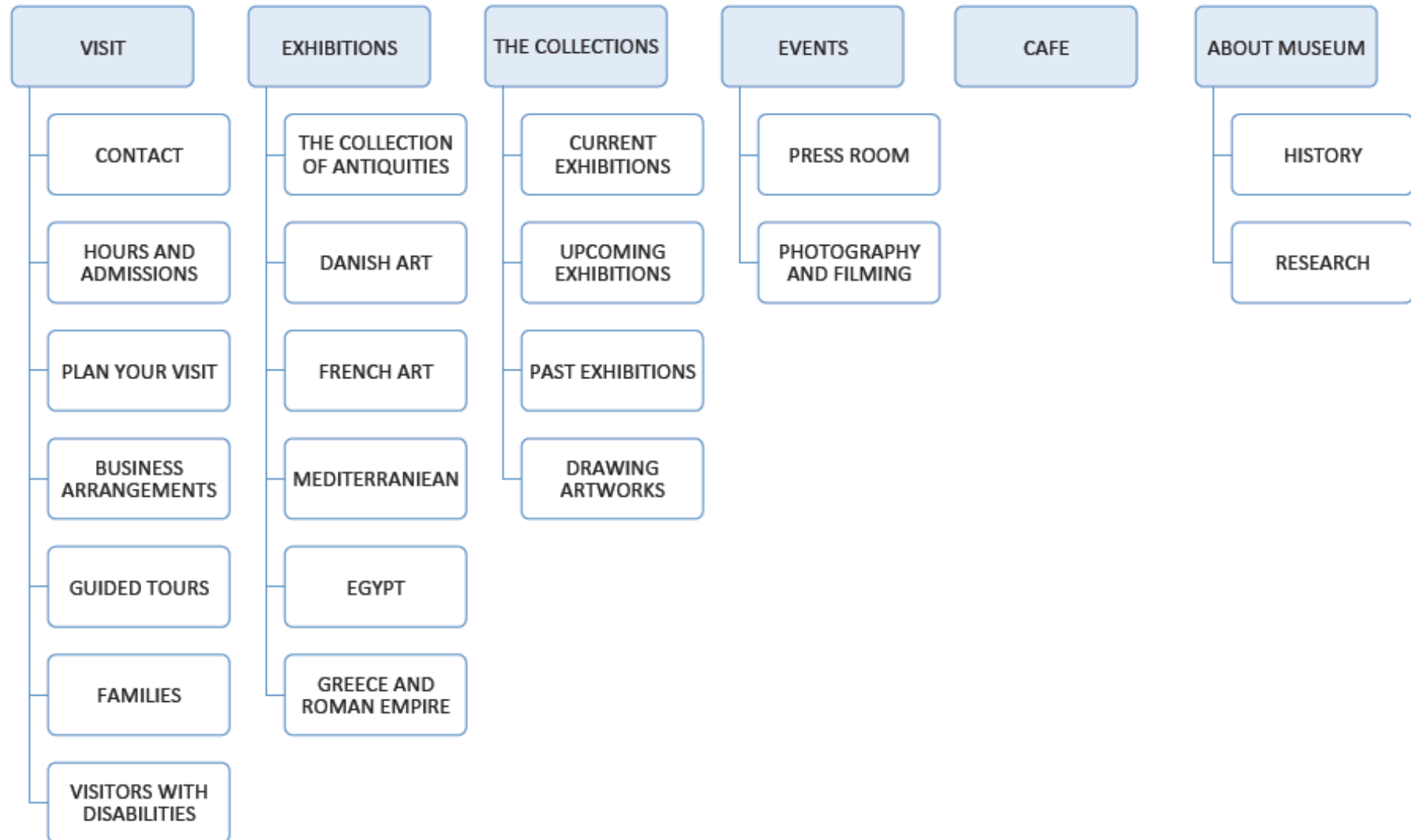
NEW MENU STRUCTURE



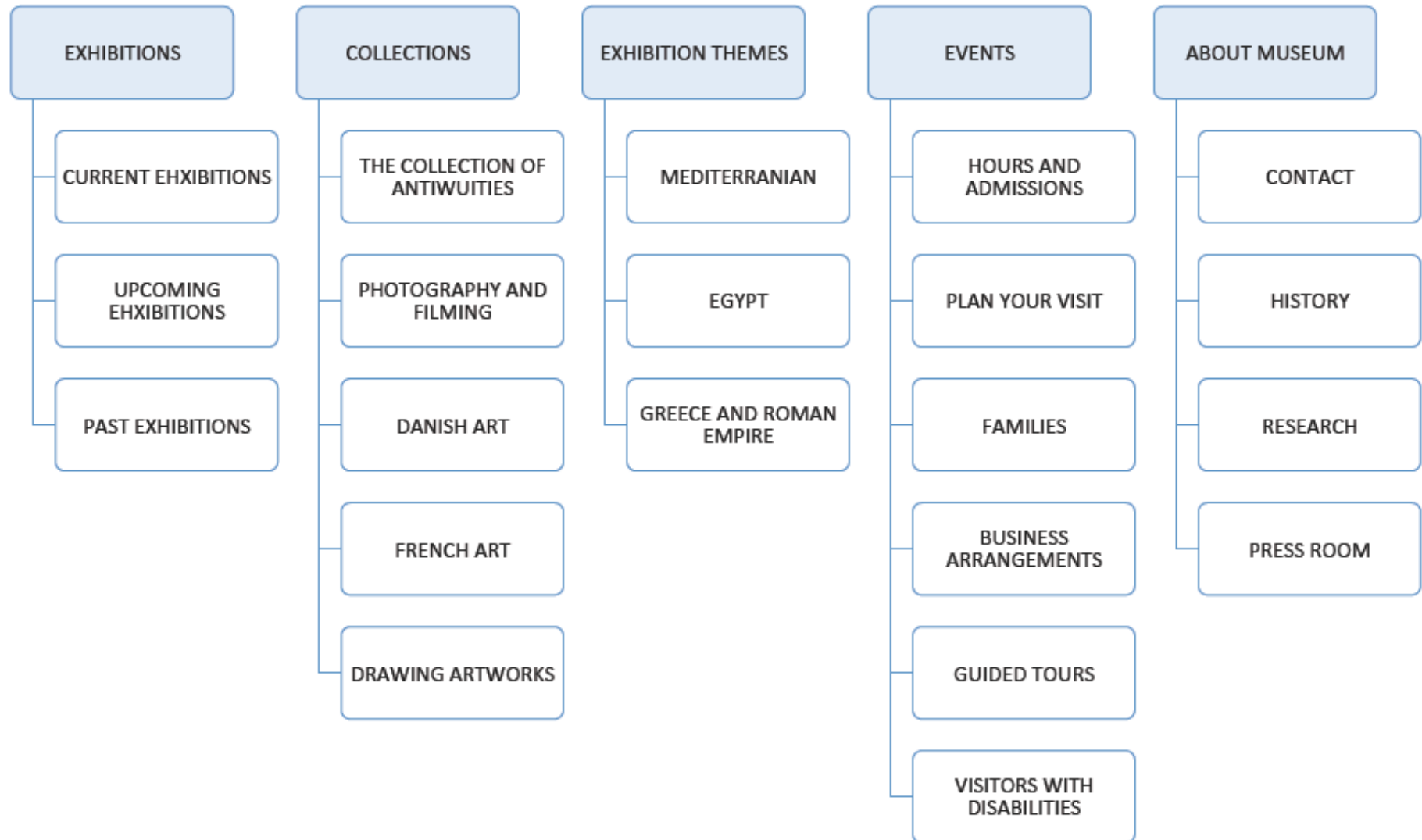
CARD SORTING - Open Test - User 1 (Age: 20-25 years old. Gender: Male)



CARD SORTING - Closed Test - User 1 (Age: 20-25 years old. Gender: Male)



CARD SORTING - Open Test - User 2 (Age: 20-25 years old. Gender: Female)



CARD SORTING - Closed Test - User 2 (Age: 20-25 years old. Gender: Female)

